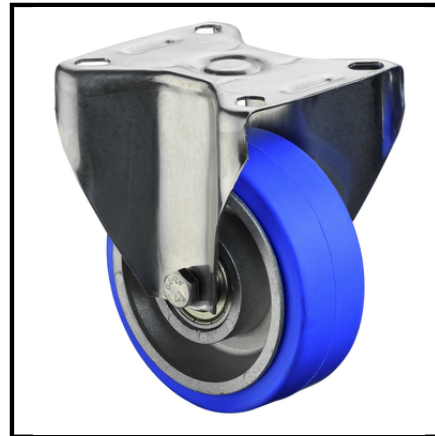


H110.B24.100
Fixed castors
Bakery castor

EAN 4021885096090

Technical data

Wheel Ø	100 mm
Load capacity	100 kg
Tread	Rubber blue, -40°C/+250°C
Mounting height	127 mm
Bearing	Ball bearing
Hole spacing distance	80x60 mm
Plate size	95x80 mm
Wheel width	40 mm
Wheel body	Aluminium
Offset	32 mm
Screw hole Ø	9 mm



Rolling resistance	● ● ● ●
Wear resistance	● ● ●
Floor preservation	● ● ●