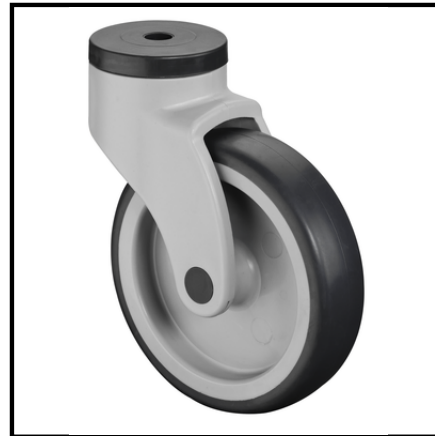


**C101.A81.125**  
**Swivel castors**  
**Plastic castor**

**EAN 4021885115845**

**Technical data**

<b>Wheel Ø</b>	125 mm
<b>Load capacity</b>	100 kg
<b>Tread</b>	Thermoplastic rubber grey
<b>Mounting height</b>	161 mm
<b>Bearing</b>	Plain bearing
<b>Ø Backhole</b>	12.5 mm
<b>Wheel width</b>	32 mm
<b>Wheel body</b>	Plastic
<b>Offset</b>	43 mm



<b>Rolling resistance</b>	● ● ● ●
<b>Wear resistance</b>	● ● ● ●
<b>Floor preservation</b>	● ● ●