

# Mobility for Machinery and Equipment Levelling Feet and Lifting Castors



## All advantages at a glance

- Equipment that was previously stationary can now be relocated
- Movable, steerable castors and secure feet all in one
- Replacement of conventional machine feet
- Huge time savings when moving machinery
- Simplify process and relocation flows
- Less manpower and strength required when moving, protects the back and knees
- No need for transport equipment (e.g. forklift or pallet truck)
- Save on relocation costs
- High level of production flexibility
- Easy relocation even in tight spaces
- Low installation heights
- Simple, individual levelling
- Fix the feet/castors with brakes or levelling feet
- Permanently secure and stable for production
- Load capacity per foot/castor up to 750 kg



### Summary

- **Faster production changeovers**
- **Accelerated workflow changes**
- **Optimised workflow**

## Areas of application

- Mechanical and process plant engineering – initial installation
- Industrial manufacturing
- Intralogistics
- Factory equipment workshop/assembly car
- Shelving systems
- Laboratory, measuring and testing equipment

## The alternative to static machine feet

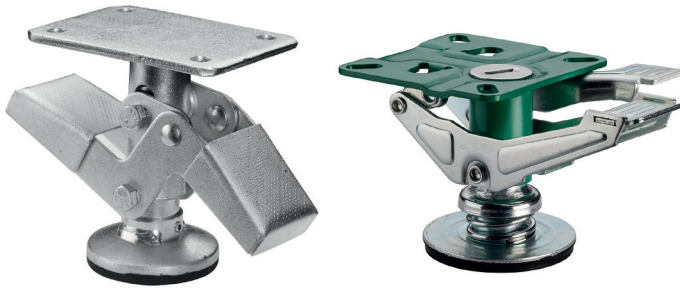
While today machines need to be **secure and stable** during production, tomorrow the requirement may be different: the machine or equipment needs to be **moved flexibly**.

During frequent production changeovers, lifting castors and levelling feet can do both, unlike conventional machine feet.

## Secure and stable - easy relocation

The relocation of machines and equipment has normally involved a great deal of effort, since they are usually fixed in place. Transportation requires a lot of manpower and supporting equipment such as forklifts etc. **Variable foot solutions simplify relocation** and provide the **secure, level footing** required for use in the new location.

## Levelling feet



- Four castors take the load capacity, the levelling feet provide locking and fixing
- Combination with swivel or fixed castors in different diameters
- Simply pedal and lock with no need to bend down
- Automatic levelling when locking
- One-step: Locking and unlocking of the locking mechanism with separate pedals
- Integrated spring shock absorption of 20 – 40 mm
- Non-slip rubber feet protect floors
- Quick change from standing to rolling position



**For lighter units that have to be moved often, in combination with four castors.**

## Lifting castors with brake

50 - 400 kg



- Steerable castors with lifting function
- Fixing with locking brake
- Levelling foot made of steel, fully lockable with locking nut
- Secure and stable
- Fork made of galvanised sheet steel
- Dual-row ball collar in fork head for good control
- Ball bearings for smooth movement
- Different wheel bodies and treads



**When relocation needs to be more frequent, but a firm footing is also required.**

## Lifting castors with levelling

50 - 750 kg



- Steerable castors with lifting function
- Integrated levelling foot
- Fixing with levelling wheel or ratchet adjustment
- Highly precise levelling
- Outstanding stability
- Extremely robust aluminium housing
- Dual-row ball collar in fork head for good control
- Plain bearings for heavy weights
- Different wheel bodies and treads



**For extreme stability and vibration requirements, infrequent relocation.**

(When using four castors, the maximum load capacity is only the specified load capacity of two castors.)

Our team will advise you on optimal mobility solutions for your machinery and equipment

BS Rollen GmbH  
Rotzkotten 14  
42897 Remscheid  
GERMANY

Phone +49 2191 59217-0  
Fax +49 2191 59217-17  
www.bs-rollen.de  
info@bs-rollen.de

**BS ROLLEN®**  
we are moving everything