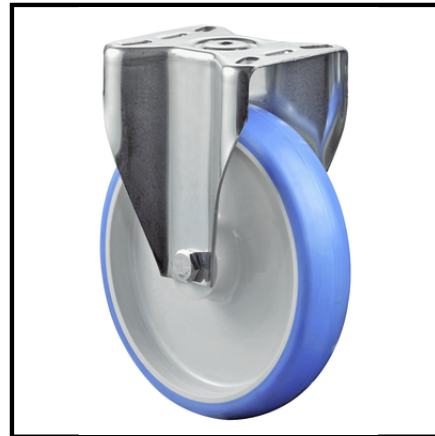


H110.B32.200
Fixed castors
Stainless steel transport castor

EAN 4021885095710

Technical data

| | |
|------------------------------|--------------------------------------|
| Wheel Ø | 200 mm |
| Load capacity | 300 kg |
| Tread | Polyurethane blue 85 +/-4 Shore A |
| Mounting height | 240 mm |
| Bearing | Plain bearing |
| Hole spacing distance | 105x80 mm |
| Plate size | 129x106 mm |
| Wheel width | 50 mm |
| Wheel body | Plastic |
| Offset | 48 mm |
| Screw hole Ø | 11 mm |



| | |
|---------------------------|---------|
| Rolling resistance | ● ● ● ● |
| Wear resistance | ● ● ● ● |
| Floor preservation | ● ● |